






**335/337 Lords Place Orange NSW**

3  2  4 

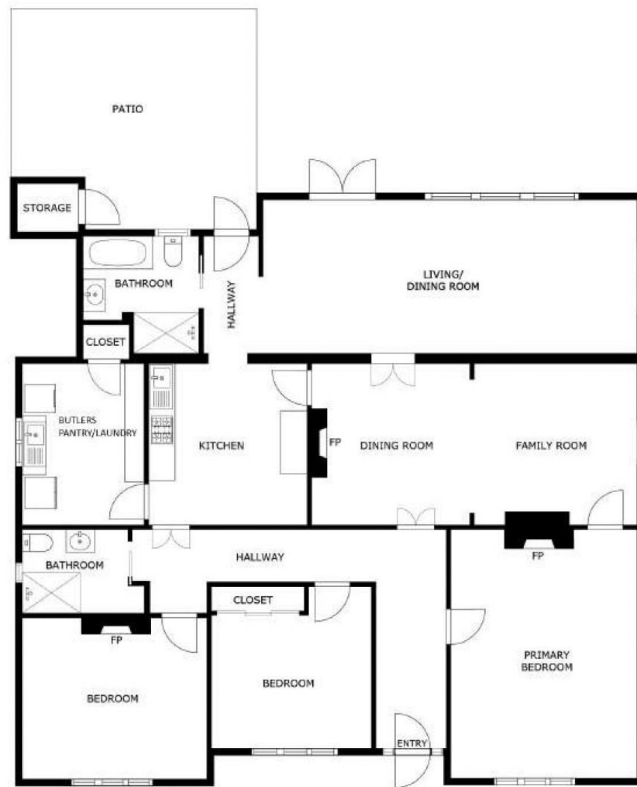
Welcome to "Middlesex", an immaculately maintained Edwardian residence, gracefully positioned at 335-337 Lords Place in the heart of Orange. Dating back to circa 1908, this captivating three-bedroom, two-bathroom home harmoniously blends timeless period features with contemporary comfort, making it the perfect haven for families and professionals seeking a refined lifestyle. Step inside and be charmed by original timber flooring, ornate fretwork, soaring decorative ceilings, leadlight windows, and beautiful fireplaces, all testament to the home's rich heritage. Each bedroom is generously sized, providing ample space for relaxation. The home offers both formal and casual living and dining areas, catering effortlessly to both entertaining and everyday family life. The casual living

**Type** : House  
**Price** : Buyers Guide \$1,950,000 - \$2,100,000  
**Land Size** : 822 sqm  
**View** : <https://www.orangerealestate.com.au/87022>  
 10



**Brad Randahl**  
 0409 322 090

[For full version visit the website](https://www.orangerealestate.com.au)



FLOOR PLAN

SIZES AND DIMENSIONS ARE APPROXIMATE, ACTUAL MAY VARY.